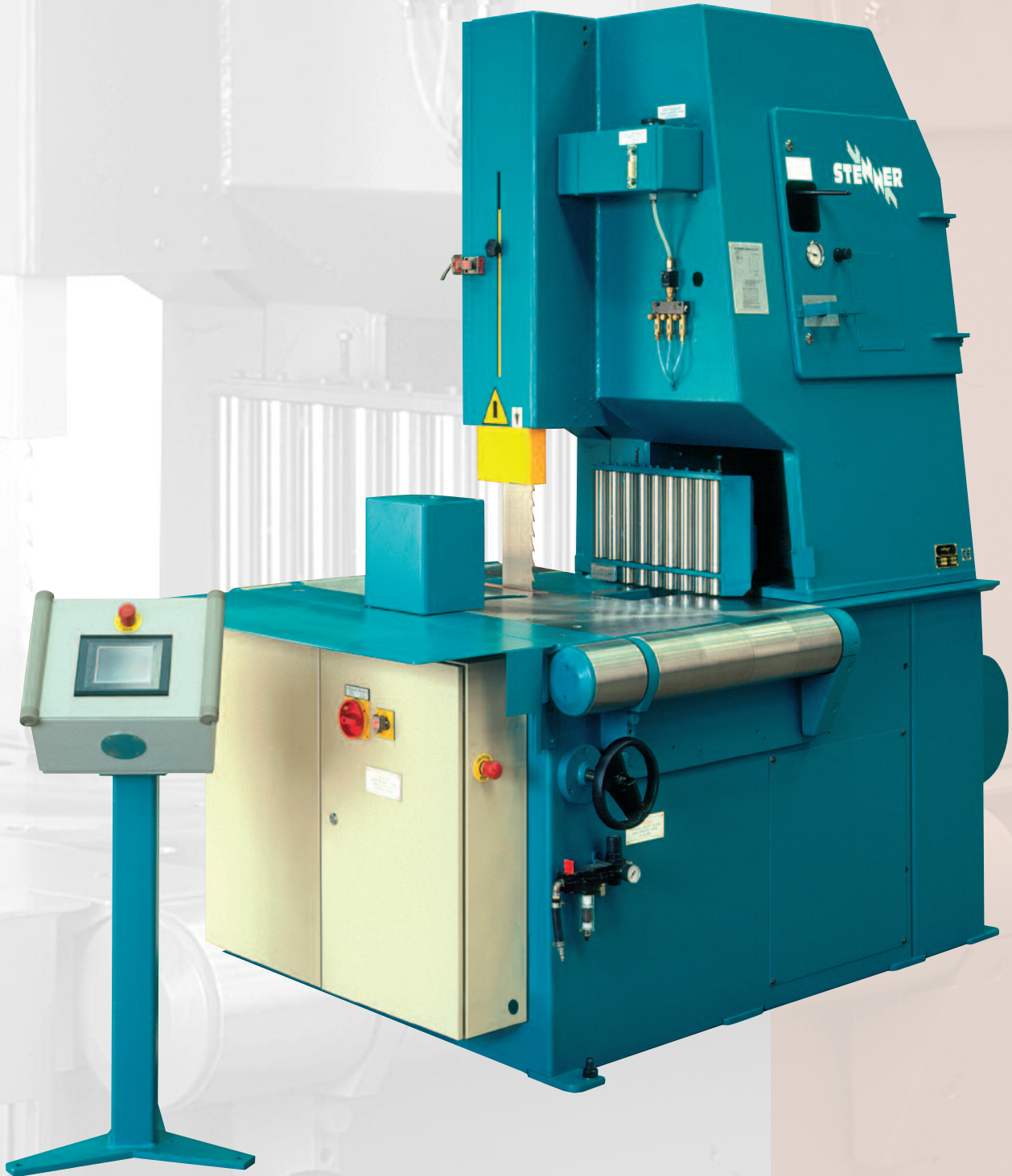
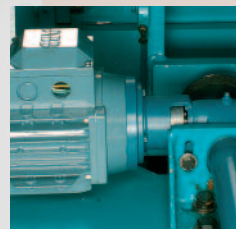
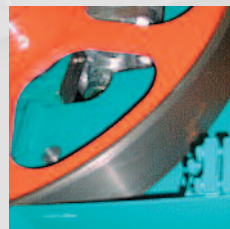


# ST130 RESAW

**STENNER**



Ultimate specification,  
refined power and  
performance



The ST130 combines the performance available from a 130mm wide bandsaw with the convenience of a machine that requires no special fixing other than bolting it to the factory floor.

The resulting package is a very high performance radial arm resaw capable of producing quality sawn timber from even the largest of cross sections.

As a standard the machine includes key features which ensure both its performance and its reliability. These include a power operated heavy duty multi-roller fence; a genuine radial arm operated by "soft" pneumatics ensuring both safe movement and maximum drive; heavy duty table rollers and operation and diagnostics undertaken by a single HMI controller.

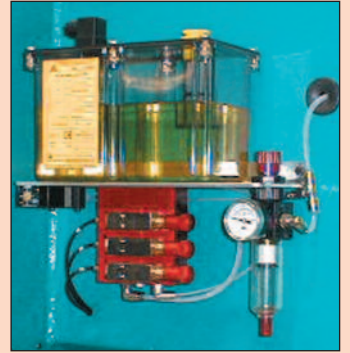
The ST130 can be further uprated by adding drive to the table rollers, their speed being automatically synchronised with the radial arm feed. The HMI can be relocated in a remote control pedestal and a programmable fence setting system incorporated. In addition where a number of different species are to be sawn then variable blade speed can be provided to optimise performance.



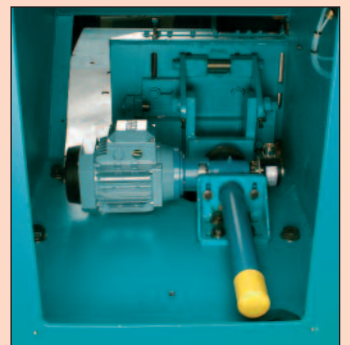
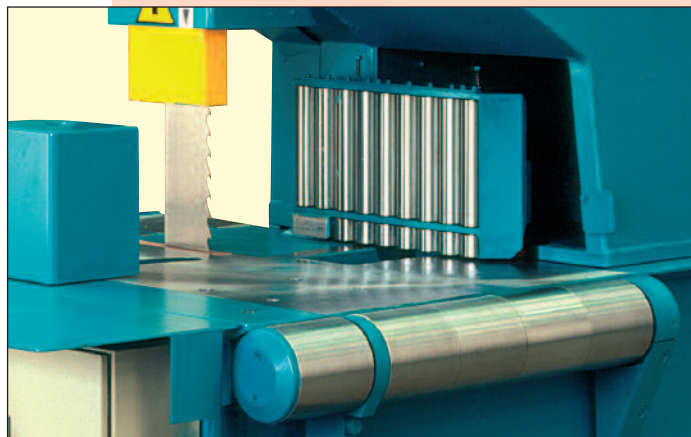
Pressure Saw Guides ensure accuracy



HMI Control Unit



Pressurised Spray Lubrication (Optional)



Power Operated Fence

Sales and marketing by Main Distributor:



WOODWORKING MACHINES WORLDWIDE

**A L Dalton Limited**

Crossgate Drive, Queens Drive Industrial Estate  
Nottingham, NG2 1LW. United Kingdom.

Tel: 0115 9865201 Fax: 0115 9862820

e-mail: sales@daltonswmw.co.uk

Website: www.daltonswmw.co.uk



ISO 9001 Certificate No. 4453

Manufactured in the UK by Stenner Ltd  
Blundells Road, Tiverton, Devon

**ST130 SPECIFICATION**

Bandsaw thickness up to	1.06 mm (19g)
Bandsaw width (Max)	130 mm
Bandsaw pulley diameter	950 mm
Depth of cut (Max)	400 mm
Max Opening:	
Roller fence to saw line	300mm
Feed rolls to saw line	300mm
Feed speeds (Variable)	5 - 60 m/min
Main motor	30kW
Cleaner fluid capacity	3 litres
Size of Machine:	
Height	2425 mm
Width	max 2800 mm
Length	max 1600 mm
Nett weight	2750 kg
Working Height	955 mm

**OPTIONAL EXTRAS**

- Variable saw speed.
- Remachinable pressure sawguide system replacing standard replaceable pressure sawguides complete with refacing machine.
- Pressure Spray Lubrication System replacing standard drip feed System.
- Programmable Fence Setting System. HMI mounted in remote pedestal and includes programmable setting system.
- Powered table rollers synchronised with radial arm feed.
- Sawblade deviation detector.
- Timber detection device allowing automatic operation of radial arm.
- Arris, spiked and rubber covered feed rollers for customers differing applications.
- Ammeter to measure load on main motor.

The company has a policy of continuous product development and improvement, specifications are therefore subject to change without notice. The company accepts no liability for discrepancies in specifications or illustrations contained in its publications.